

**CURVE**  
 RADIUS = 300  
 Δ = 81° 18' 00"  
 L = 423.70  
 T = 237.80  
 CH = 290.07

This is to certify that this plan was completed by M.R. Group P.C. on December 17, 1986 from the notes of an excavation survey conducted on September 1985 in accordance with reference material listed below.

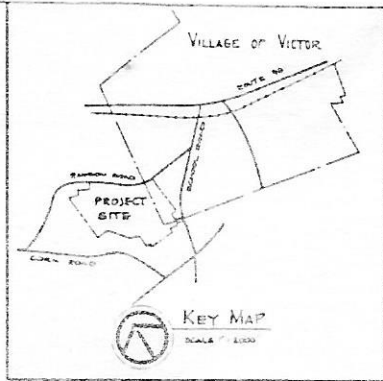
Signed: *Paul E. Soder*  
 Paul E. Soder L.S. Lic. No. 49606

**CURVE**  
 RADIUS = 300  
 Δ = 50° 54' 32"  
 L = 246.56  
 T = 142.80  
 CH = 237.80

**REFERENCES**

- 1) Map 11187 - Boundary Survey - 1/2 Acre Property by L.R. Ruck - 1965
- 2) Map by Anderson-Reedman Surveyors dated Aug 20 1978 Filed in the Ontario County Clerk's Office at # 6152
- 3) Map of M.D. Keston Company by Supt. Brown - 1965
- 4) Map of "Lots of Harriet & S. Amphetamine N. Hersey by Douglas Kern dated Jan 3 1985
- 5) L. 850 Dimes P. 574 filed in Ontario County Clerk's Office
- 6) Village of Victor - 1980
- 7) Town of Victor - 1980
- 8) Record plans will be prepared for knowledge and filing purposes

VILLAGE OF VICTOR PLANNING BOARD      DATE: \_\_\_\_\_  
 VILLAGE OF VICTOR ENGINEER      DATE: \_\_\_\_\_



BUILDING LAYOUT BY  
**GLAVIN and VANIDERSTINE**  
 LANDSCAPE ARCHITECT  
 726 WEST ONONDAGA STREET  
 SYRACUSE, NEW YORK 13204

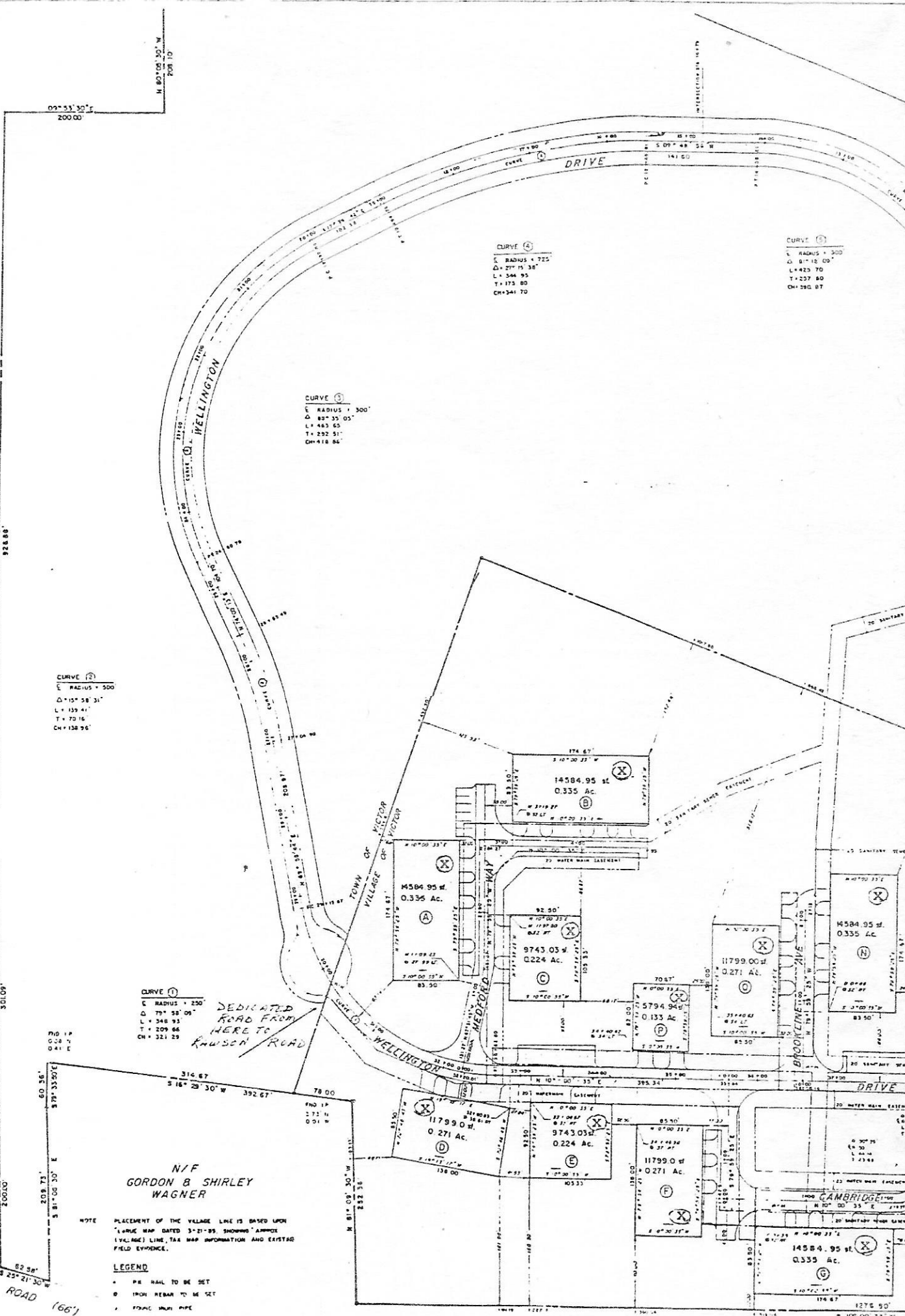


**M.R.B. GROUP P.C.**  
 ENGINEERING ARCHITECTURE SURVEYING P.C.  
 100 BELMONT ST. FLD. ROCHESTER, NEW YORK 14625

**THE DRUMBLIN ASSOCIATES**  
 60 W. 31st St.  
 VICTOR, NEW YORK 14564

PRINTED  
 BY  
 WOODS  
 VICTOR, NEW YORK

N/F HAROLD & ANTOINETTE HERSHEY



09° 53' 30" E  
200.00'

N 80° 00' 30" W  
208.70'

N 80° 07' 00" W  
228.88'

**CURVE (1)**  
RADIUS = 500'  
Δ = 15° 58' 31"  
L = 139.41'  
T = 70.16'  
CH = 138.96'

**CURVE (2)**  
RADIUS = 300'  
Δ = 80° 35' 05"  
L = 483.63'  
T = 232.51'  
CH = 418.84'

**CURVE (3)**  
RADIUS = 725'  
Δ = 27° 15' 38"  
L = 544.95'  
T = 173.80'  
CH = 341.70'

**CURVE (4)**  
RADIUS = 300'  
Δ = 81° 15' 00"  
L = 423.70'  
T = 237.80'  
CH = 280.87'

**CURVE (5)**  
RADIUS = 230'  
Δ = 79° 58' 08"  
L = 348.93'  
T = 209.86'  
CH = 321.29'

DEDICATED ROAD FROM  
HERE TO  
RAUSON ROAD

N/F  
GORDON & SHIRLEY  
WAGNER

NOTE: PLACEMENT OF THE VILLAGE LINE IS BASED UPON  
A LARGE MAP DATED 3-21-89, SHOWING APPROX  
VILLAGE LINE, TAX MAP INFORMATION AND EXISTING  
FIELD EVIDENCE.

**LEGEND**

- PE NAIL TO BE SET
- IRON REBAR TO BE SET
- FPM/C IRON PIPE

SCHOOL  
ROAD (66')

LAKE

# ROCHESTER 6-COUNTY AREA

ONTARIO

EXHIBIT F  
LOCATION MAP

